

## Important Dates

**Dec 5 – Saturday.** Holiday Remembrance - 1PM at Burritt Hill Funeral Home, 332 Burritt Street, New Britain, CT and 4PM at Newington Memorial Funeral Home, 20 Bonair Avenue, Newington, CT.

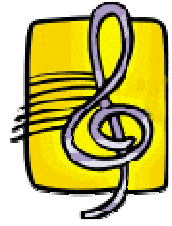
**Dec 6 – Sunday.** Worldwide Children's Day Candle Lighting Ceremony held at the base of the Christmas Box Angel in Newington

**Dec 8 – Wednesday .** TCF Meeting

**Dec 12 – Sunday.** Worldwide Candle Lighting, 4:00 PM in Waterbury or 7 PM privately

## A Love Song

The mention of my child's name  
May bring tears to my eyes,  
But it never fails to bring  
Music to my ears  
If you are my friend,  
Please don't keep me  
From hearing the beautiful music.  
It soothes my broken heart  
And fills my soul with love.



By Nancy Williams, TCF NJ

Reprinted from Northshore/Boston Newsletter, Sept 2009



## Worldwide Candle Lighting

Held annually the second Sunday in December, this year December 12, 2010, The Compassionate Friends Worldwide Candle Lighting unites family and friends around the globe in lighting candles for one hour to honor and remember children who have died at any age from any cause. As candles are lit at 7 p.m. local time, creating a virtual wave of light, hundreds of thousands of persons commemorate and honor the memory of children in a way that transcends all ethnic, cultural, religious, and political boundaries.

Now believed to be the largest mass candle lighting on the globe, the Worldwide Candle Lighting, a gift to the bereavement community from The Compassionate Friends, creates a virtual 24-hour wave of light as it moves from time zone to time zone. Hundreds of formal candle lighting events are held and thousands of informal candle lightings are conducted in homes as families gather in quiet remembrance of children who have died, but will never be forgotten.



## Heaven's Very Special Child

A meeting was held quite far from Earth.  
"It's time again for another birth."  
Said the angels to the Lord above,  
"This special child will need much love."  
His progress may seem very slow  
Accomplishments he may not show  
And he'll require extra care  
From the folks he meets way down there.  
He may not run or laugh or play  
His thoughts may seem quite far away  
In many ways he won't adapt  
And he'll be known as handicapped.  
So let's be careful where he's sent  
We want his life to be content  
Please, Lord, find the parents who  
Will do a special job for you.  
They will not realize right away  
The leading role they're asked to play  
But with this child sent from above  
Come stronger faith and richer love.  
And soon they'll know the privilege given  
In caring for this gift from heaven  
This precious charge, so meek and mild,  
Is heaven's very special child.

Author unknown

Reprinted at the request of Mary Ann Davis in  
memory of her son Kyle.

Reprinted from TCF Atlanta Newsletter, Fall 2009  
<http://www.tcfatlanta.org/>